



VistaLuxe® Collection

WD LINE



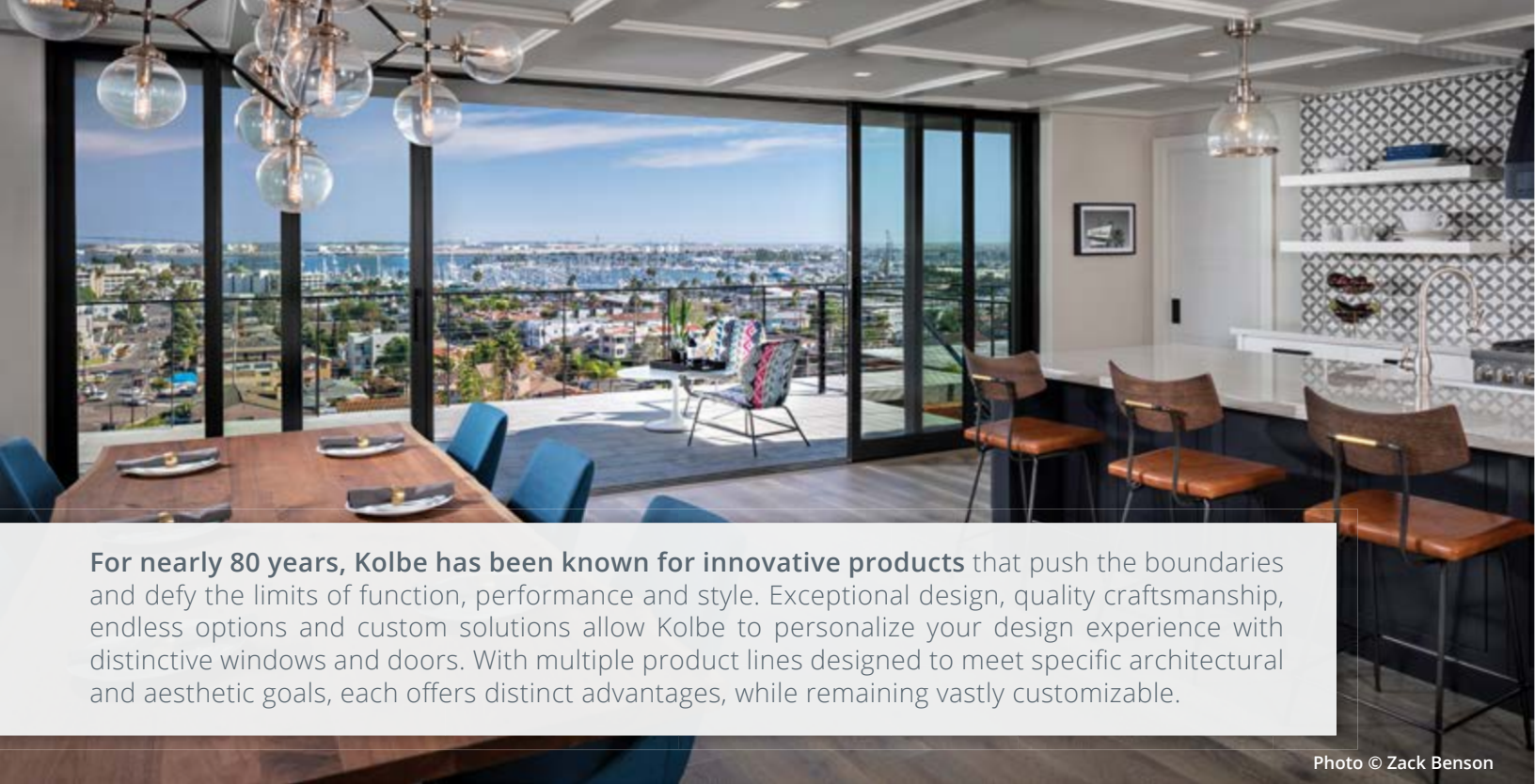


Photo © Zack Benson

VistaLuxe® Collection

Ideal for contemporary designs that utilize clean lines and large expanses of glass.

The VistaLuxe Collection WD LINE provides:

- Industry-leading frame-to-daylight-opening ratio for an increased viewing area
- Extruded aluminum exterior with 50+ standard colors & finishes, as well as custom hues
- Warm wood interior in familiar to exotic species, with 20+ standard pre-finishes, plus custom colors
- Consistent profiles offered in two styles with square interiors & exteriors
- The look of steel, used as an alternative to or in conjunction with steel products
- Precise horizontal & vertical alignment on mullioned windows with glass in the same plane
- Numerous hardware styles & finishes



© Tom Grimes Photography

Energy Efficiency

Kolbe participates in the Window & Door Manufacturers Association (WDMA) Hallmark Certification and ENERGY STAR® programs to ensure that our products are tested to industry standards created to meet today's strict building codes.

Many of Kolbe's products can meet California's Title 24 Building Energy Efficiency Standards. Kolbe can also assist with LEED®, green build, and sustainable project goals.

Visit: kolbewindows.com/solutions/energy-efficiency



Photo © Dolf Vermeulen

Performance

Kolbe's wood-and-aluminum-clad window and door products are tested to meet North American air, water and structural certification requirements. When it comes to mulled assemblies or larger configurations, we can help with design considerations to ensure the products meet the necessary performance requirements for the project. Select products are available with hurricane impact performance options.



Photo © Nat Rea Photography

Architectural Design

Kolbe's VistaLuxe WD LINE products were designed in collaboration with architects to combine with other VistaLuxe Collection windows and doors. This allows the ability to achieve large expanses of glass and floor-to-ceiling views in various configurations. The clean lines, organic aesthetic, hardware, glass and finishes are just some of the style and functionality options available to meet the needs of contemporary designs.



Photo © Dolf Vermeulen



Style & Design Options

Kolbe's variety of options allows you to choose wood species, divided lite patterns, sizes, shapes, interior and exterior finishes, hardware, and more – or create an even more personalized design with our custom solutions.

Scan the QR code
to explore our full
selection of VistaLuxe
WD LINE products
& options.



kolbewindows.com/vistaluxe-wd

Windows

- Casements* (crank-out)
- Awnings* (crank-out)
- Sliding (single, double, triple, quad)
- Folding
- Direct sets (rectangular*, geometric, radius)
- Corner direct sets

Doors

- Sliding*
- Stretta™ sliding
- Multi-slide
- Folding*
- Inswing
- Outswing*
- Pivot

Glass

- Double pane; Insulated glass
- Triple pane; Insulated glass
- Various Low-E coatings
- Specialty & privacy glass

Divided Lites

- Performance divided lites (square & triangular profiles)

Hardware

Kolbe's VistaLuxe WD LINE windows and doors are available with contemporary styles and finishes to complement your décor and match the aesthetic of your design.

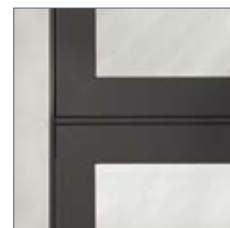
Automation

For ease of use, Kolbe integrates advanced technology into select windows and doors.

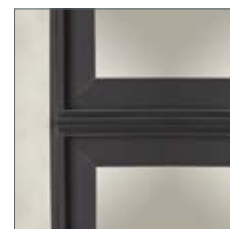
Impact Performance

Kolbe's impact-certified products are specially designed with the strength and durability to withstand hurricane force winds and flying debris, and are tested extensively to meet or exceed the strict building codes of the coastal regions.

Profiles



- Flush (Sash is level with the frame)



- Accent (Sash is recessed from the frame)

Wood Species

In addition to the standard pine, VistaLuxe WD LINE windows and doors can be constructed of other optional wood species that enhance their look. Pine and other wood species are sourced from managed forests. The Forest Stewardship Council® (FSC®)-certified wood species are also available to help support responsible forestry (FSC® license code FSC®-C019541).



Ask about additional available wood species.

Interior Finishes

For units that are ready to install upon delivery, Kolbe's VistaLuxe WD LINE windows and doors can be prefinished on the interior with one of the water-based stains or paints shown. Stained units are given two coats of satin clear finish. Because our interior finishes are water-based, low-VOC stains and paints, you can rest assured you've made an environmentally conscious decision. Custom colors may be requested as well.



Exterior Colors & Finishes

Kolbe's aluminum-clad VistaLuxe WD LINE products are available in a range of high-performance exterior finishes designed for exceptional durability, chemical resistance, abrasion, corrosion protection, and long-term weathering performance backed by a 30-year warranty†.



*Applied as a single coat of paint, with some visible wood grain.
Stain colors are shown on pine. Since no two trees are identical, wood can be expected to differ both in color and graining. These factors will influence the stain's final color. Printed images of wood species and stain options will vary from actual product colors. Selections should be made based on color samples available from your Kolbe dealer. Color-matched interior paint is available through any Sherwin-Williams retail store in the United States and Canada. The color formula for Kolbe's interior paint finishes is in their National Account System.
** Mica finishes are 70% PVDF fluoropolymer as standard. Fluoropolymer coatings meet performance requirements of AAMA-2605 and are recommended for coastal and heavy salt concentration areas. Please see your Kolbe dealer for details.
Some options for our products may have limited color offerings or may incur a nominal charge. Check with your Kolbe dealer for further details on pricing and availability. Printed images of exterior finishes may vary slightly from actual colors. Selections should be made based on actual color samples available from your Kolbe dealer.
† Anodized finishes are warranted for 10 years.
There is a "color range" with anodized colors. That is, there is an acceptable "light" to "dark" color range that can be experienced on any job. According to AAMA 611-98 specifications, Section 8.3, the range may be up to 5 Delta E's. We can provide from our anodized vendor color samples of this color range if requested. The color range is due to numerous variables which include (but are not limited to) the shape of the parts, alloy variations and time in the anodizing process. This could mean that a sash part may appear slightly different in color than a frame part. This is/will be acceptable. Even the samples that may be provided may vary from the final product due to the variables. You must be aware of this as this will be considered acceptable.



Professional Tools

Kolbe prides itself on offering the tools and resources architects, builders and other industry professionals need to complete their projects. From product specifications and 3D models to continuing education courses and webinars, Kolbe supports all of your project needs.

Scan the QR code to learn more about our tools & resources for professionals.



kolbewindows.com/resources

Architect Library

Kolbe's Architect Library is the main resource for specifying Ultra Series windows and doors. Search detailed product information, including:

- Cross section drawings
- Elevation charts
- 3D Revit® models
- CSI specifications
- Installation instructions

Additional resources include:

- Door configurations
- Clear openings
- Care & maintenance guide
- Acoustic data
- Energy performance
- Performance class & grade
- Product brochures
- Color & design samples
- Warranties

AIA/CES Courses

As a Registered AIA Continuing Education Services (CES) provider, Kolbe provides AIA Learning Units (LU) and/or Health, Safety & Welfare (HSW) credits as required per state and/or professional memberships to meet yearly requirements.

Virtual Showrooms

Experience Kolbe's full capabilities through three interactive showrooms filled with product displays and custom solutions.

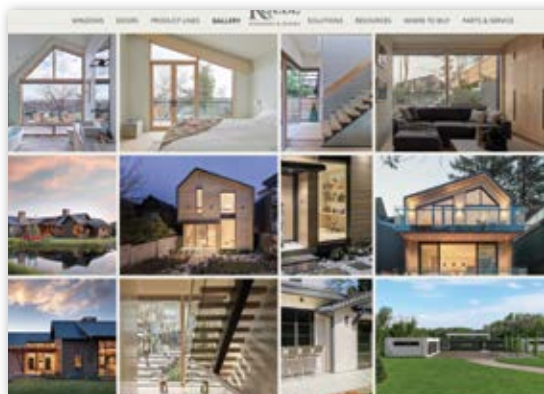
kolbewindows.com/virtual-showroom



Inspiration Gallery

Browse through photos, videos, project profiles and custom solutions.

kolbewindows.com/gallery



Product Sizes

We're pushing the limits of VistaLuxe WD LINE windows and doors, with large sizes for generous openings. The chart below features at-a-glance maximum dimensions for some of these versatile products.

Sizes listed below provide a quick overview of maximum size capabilities. For exact dimensions, detailed limitations and product options, contact your Kolbe window and door expert to discuss our full capabilities and custom solutions.

Windows	Net Frame Size	
	Largest Size with Maximum Width (WxH)	Largest Size with Maximum Height (WxH)
Crank-out Casement Operable (Dual Glazed)	38" x 80"	32" x 96"
Crank-out Casement Operable (Triple Glazed)	38" x 74"	29" x 96"
Crank-out Casement Picture	147" x 86"	86" x 147"
Crank-out Awning Operable	60" x 60"	60" x 60"
Direct Set	144" x 95"	95" x 144"
90° Corner Direct Set (factory glazed with post) <small>See Kolbe dealer for additional options.</small>	96" (L&R sides combined) x 103"	96" (L&R sides combined) x 103"

Complementary Windows	Largest Size with Maximum Width (WxH)	Largest Size with Maximum Height (WxH)
Single/Double Sliding	95-1/2" x 71-1/2"	
Triple Sliding	119-1/2" x 71-1/2"	
Quad Sliding	167-1/2" x 71-1/2"	
Folding (up to 16 panels with a 42" max. panel width)	576" x 72"	

Doors	Nominal Maximum Panel Size (WxH)	Maximum Net Frame Size (WxH)
Inswing Door (Single)	4-0 x 10-0	49-5/8" x 122-1/8"
Inswing Door (Double)	3-6 x 10-0	86-3/16" x 122-1/8"
Inswing Door Sidelite Fixed Sash	6-0 x 12-0	74-3/16" x 146-1/8"
Outswing Door (Single)	4-0 x 10-0	50-7/32" x 122-3/8"
Outswing Door (Double)	3-6 x 10-0	86-7/8" x 122-3/8"
Outswing Door Sidelite Fixed Sash	6-0 x 12-0	74-1/8" x 146-3/8"

The Stretta™ Sliding Door is available with maximum panel widths up to 118" and heights up to 141", dependent upon the weight of the glass.

Complementary Doors	Nominal Maximum Panel Size (WxH)	Maximum Net Frame Size (WxH)
Pivot Door	5-0 x 10-0	62-3/8" x 122-5/16"
Folding Door (up to 16 panels)	3-6 x 10-0	576" x 125-1/8"
Sliding Door (2 panels)	5-0 x 10-0	120" x 122-7/16"
Sliding Door (3 panels)	5-0 x 10-0	182-1/2" x 122-7/16"
Sliding Door (4 panel Bi-Parting)	5-0 x 10-0	238-9/16" x 122-7/16"
Multi-Slide Door (up to 10 panels)	5-0 x 10-0	558" x 122-7/16"

NOTES:

Not all VistaLuxe WD LINE products are represented. See your local Kolbe dealer for more information.

Some of the unit sizes shown have not been tested. Visit our Performance Class & Grade page under the Resources tab of kolbewindows.com for maximum size data on tested products.



Scan the QR code to see
our full VistaLuxe WD
LINE brochure & other
available literature.



kolbewindows.com/brochures

KOLBE
WINDOWS & DOORS
We're for the visionaries.®

1323 S. 11th Avenue | Wausau, WI 54401-5998
715.842.5666

www.kolbewindows.com

© 2025 Kolbe & Kolbe Millwork Co., Inc. Kolbe & Kolbe Millwork Co., Inc. reserves the right to change specifications without notice. The photography featured herein does not necessarily imply an endorsement of Kolbe products by the property owners. Photography used may not represent current Kolbe product features and options.
Front and back cover credits – Architect: studioSTL | Photographer: Josh Partee

1300004718-3K-1025-RP